

# Deltek wlnsight™ 6.4 What's New

## Avoid audit surprises with wlnsight's new early warning indicators

### BENEFITS

**Deltek wlnsight 6.4 provides:**

- New DCMA/OSD trip wire metrics
- UN/CEFACT XML Data Import and Export Support
- Published Periods for faster, more reliable data
- Easier OMB 300 BY09 Reporting

### EARNED VALUE MANAGEMENT

Deltek wlnsight is an earned value management tool specifically designed to engage technical, schedule and financial professionals in proactive management of their projects. It provides state-of-the-art techniques to quickly locate problem areas, graphically review performance trends, generate statistical estimates at completion and obtain feedback from team members.

wlnsight scales from entry level schedule-based earned value systems through complete

enterprise resource planning (ERP) systems. Data can be viewed in dollars, hours or equivalent persons (EQP).

This highly-scalable system easily integrates with a wide range of project management tools—including SAP, Microsoft Project, Primavera P3/SureTrak, Deltek Open Plan and Cobra, Business Engine Micro-Frame Program Manager (MPM), and IMC Millennium—to provide a common database for analysis and reporting on all projects across your entire organization.

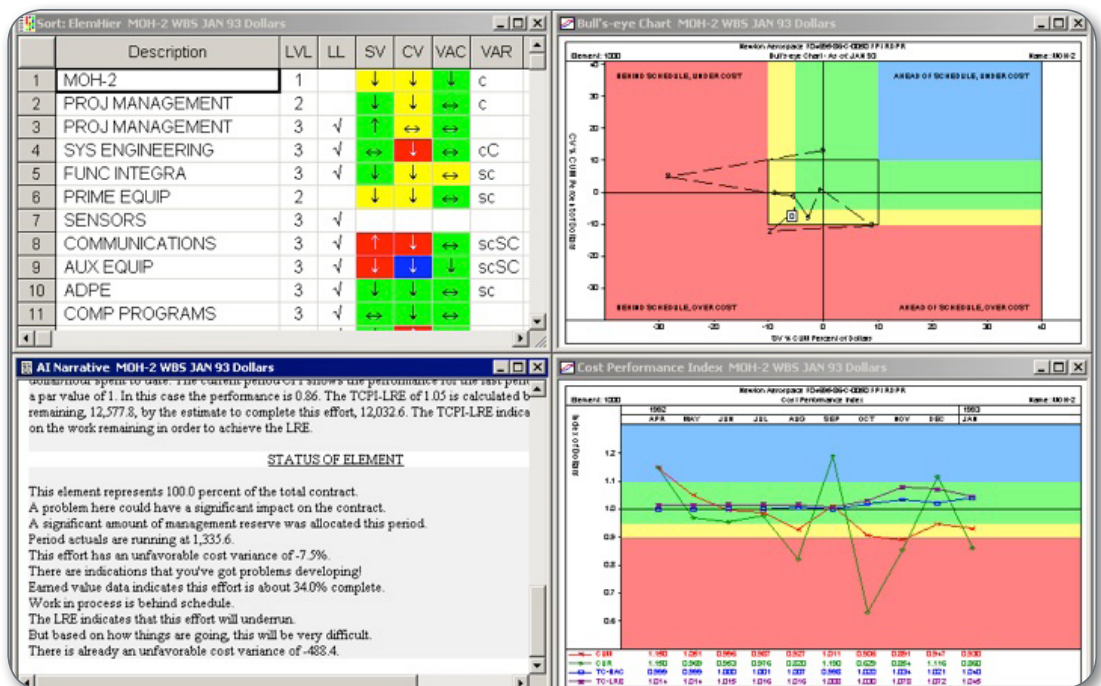


Fig. 2: Easy to Read KPIs Help Avoid Surprises



Contact  
Deltek

[www.deltek.com](http://www.deltek.com)  
[info@deltek.com](mailto:info@deltek.com)  
800.456.2009

Deltek (NASDAQ: PROJ) is the leading provider of enterprise applications software designed specifically for project-focused businesses. For more than two decades, our software applications have enabled organizations to automate mission-critical business processes around the engagement, execution and delivery of projects. More than 12,000 customers worldwide rely on Deltek to measure business results, optimize performance, streamline operations and win new business.

## WINSIGHT 6.4 FEATURES AND BENEFITS

Deltek wlnsight 6.4, the latest edition to our best-in-class Enterprise Project Management (EPM) software and solutions suite. This release includes several enhancements designed to help you meet your mandated Earned Value reporting requirements:

### SEE IT BEFORE THEY DO

Get a pro-active view of your project performance with new DCMA/OSD trip wire metrics:

- Baseline Execution Index (BEI) – used to indicate the efficiency of work performed on your contracts
- Critical Path Length Index (CPLI) – calculates and graphically displays a timeline of tasks from contract start to finish

These powerful tools allow you to measure a project's performance against your project baseline so you always know exactly where your projects stand:

- Proactively identify potential performance problems early in the program lifecycle
- Color-coded warnings displayed on reports and charts alert you when user-defined thresholds are exceeded

### SHARE PROGRAM INFORMATION EASILY

Communicate your Earned Value data with your clients more easily using UN/CEFACT XML Data Import and Export Support:

- Integrates your cost, schedule, baselines and risk information for easier data flow between you and your clients
- Allows you to import data from, and export data to, UN/CEFACT XML transfer files
- Replaces older electronic data interchange (EDI) ANSI X12 formats

### TRUST THE DATA

Published Periods gives you a faster, more reliable data approval process that speeds reporting and gives your users data they can trust.

- Prevents your data from being reviewed before it is validated by assigning users and individual records with publish levels that are defined in wlnsight administrator
- Allows users to see data for any period with a publish level less than or equal to their own publish level setting
- Helps you ensure the quality and accuracy of your data before it is made widely available to project team members

### EASIER OMB 300 BY09 REPORTING

wlnsight 6.4 makes it easier for you to generate Part II, Section C of the OMB 300 BY09 report now required by the Office of Management and Budget for submitting project information.

- Highlights whether or not your contract is hitting its earned value targets
- Identifies your program's cost and/or schedule variance percentages
- Prompts you to provide information about corrective actions your are taking when variance percentages exceed 10%

For more information about wlnsight 6.4, visit our website at [www.deltek.com/wlnsight](http://www.deltek.com/wlnsight)